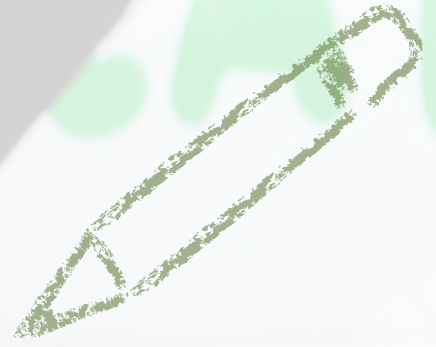




ANNUAL REPORT



Society
For Social
Support and Education



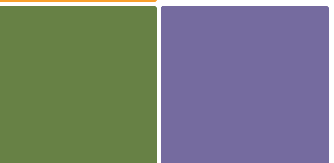


Table Of Content

1. **Opening Message: SSSE Executive Director**
2. **Meet the Team**
3. **Mission**
4. **About SSSE**
5. **Overview**
6. **Humanitarian Relief & Support**
7. **Introducing SSEF**
8. **About SSEF**





SSSE President message



Dear friends and generous supporters,

It is with sincere appreciation that I present SSSE's Annual Report for 2024-2025 – a year shaped by regional instability, the ongoing war affecting Lebanon's education system, and political shifts following the fall of the Syrian regime.

Despite these difficult circumstances, SSSE successfully maintained the full operation of its three educational centers and continued to deliver quality education to nearly 1,200 students. This achievement reflects our commitment to safeguarding children's right to learn, even in times of uncertainty.

Our progress this year was made possible through the support of our donors and partners from across the region, whose trust and solidarity have allowed us to remain on this path of impact and hope.

I extend my heartfelt thanks to the SSSE team for their dedication and perseverance and sincerely hope that years to come will bring greater stability, opportunity, and dignity for our countries and their people.

With gratitude,
Nimat Farhat Bizri
President, SSSE

Meet Our Management Team



Hiba Daher
Project Manager

Hiba Daher is a humanitarian professional with over 12 years of experience in protection, development, and education. She holds a bachelor's degree in law and a master's degree in business administration. As PM at SSSE, she oversees project planning and implementation, and budget follow-up.



Hassan Amro
MEAL officer

Hassan Amro has over 10 years of experience in the humanitarian field, focusing on education and empowerment. Hassan holds a bachelor's degree in health sciences and has worked with local and national organizations. At SSSE, Hassan monitors the quality of work in compliance with organizational and donor standards.



Janah Daher
Finance officer

Janah Daher serves as Finance Officer at SSSE. His role includes data collection and Entry, controlling accounting and Financial Operation, preparing balance sheets, reconciling bank statements, budget follow-up and ensuring accuracy and transparency with donor and organisational standards.



Rouba Al Rafei
New Project Manager

Rouba Al-Rafei is a programs and partnerships management professional with over 12 years of experience leading multi-donor initiatives across Lebanon and the region, working with both local and international NGOs. She brings a people-centered, collaborative approach grounded in community development, localization, capacity building, and a strong interest in psychology and mental well-being.

Mission

SSSE top priority is to contribute to improving the lives and future prospects for Syrian Refugee children through access to quality education in a safe environment.

In addition to delivering quality education, our programs, include components designed to instill:

- self-esteem and self-confidence.
- creativity and teamwork.
- conflict resolution abilities.

tolerance and acceptance of the views and opinions of others.

SSSE believes that where there is a will, there is a way; so, the journey towards a better future must commence and continue unabated. Our biggest challenge during current difficulties in Lebanon and worldwide remains funding.

Education is the only hope for the future of all refugee children. Providing quality unbiased education; free from all unwanted influences due to religious or political affiliations, remains our foremost goal.



About SSSE



Ghazzeah



Bar Elias



**Kamed El
Louz**

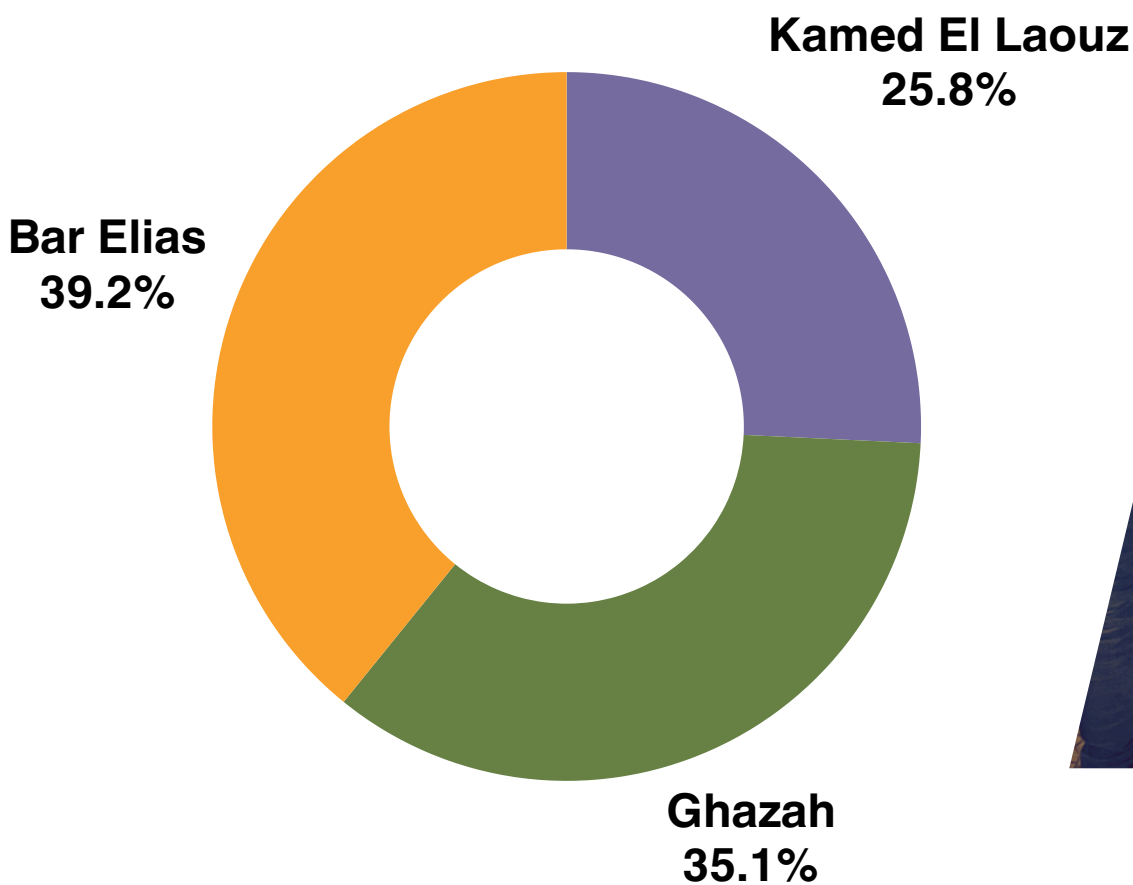


SSSE is currently in charge of the education project for 3 educational centers as well as the emergency response measures for refugee families since the beginning of the Syrian crisis in 2012, during which over 24,000 students have been given the opportunity to attend school; and over 12,000 Syrian refugee families were served.

Overview

During the 2024-2025 academic year, SSSE delivered a comprehensive education program reaching 1,394 students across its Early Childhood Education (ECE) and Basic Literacy and Numeracy (BLN) tracks. The program offered an integrated curriculum of Mathematics, Science, English, Arabic, and Digital Literacy, and supported by practical computer lab sessions. SSSE complemented classroom instruction with extracurricular activities designed to stimulate creativity, strengthen critical thinking, and promote personal growth.

Registration & Enrollment:





Educational Programs

Early Childhood Education (ECE)

SSSE implemented afternoon-shift ECE programs

Students who successfully completed the 2023-2024 ECE cycle advanced to the BLN1 level for 2024-2025, ensuring continuity of learning within SSSE's educational pathway.

Basic Literacy and Numeracy (BLN)

A 86% attendance rate was maintained throughout the academic year.

Computer Labs & Digital Literacy

Students participated in two weekly computer lab sessions across SSSE's fully equipped learning centers.

Through Digital Literacy courses, 153 students acquired essential computer skills, enhancing their readiness for future academic and employment opportunities.



Civic Education (Big Bad Boo)

Implemented "The 1001 Nights" program, using animations to teach children (ages 7-12) social-emotional skills, civic values, non-violence, inclusion, human rights, and gender equality in both formal and informal learning environments.

Extracurricular Activities & Achievements

Choir

Led by the music teachers at the centers, 57 Syrian students participated in weekly choir lessons. SSSE Choir members performed at the end of year show in the three centers.



Cricket

In collaboration with Marylebone Cricket Club (MCC UK), 74 Syrian and Lebanese students received two weekly cricket sessions at SSSE centers.



As part of SSSE extracurricular enrichment efforts, Level 2 student cricket team achieved first place in the national cricket tournament, organized by Al-SAMA Cricket organization and competing against teams from across Lebanon, including the Bekaa, South, and North regions. This victory reflected not only the students' physical skills but also their teamwork, discipline, and commitment.

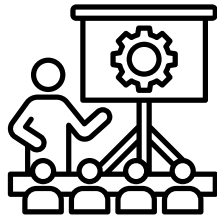
End of Year Show

The three educational centers held their annual end-of-year celebrations in July 2025. These events marked a joyful conclusion to the academic year and showcased the students' talents and educational achievements. Each class had the opportunity to present its own segment on stage, allowing every student to participate and shine.



Teacher Training & Development

External Workshops



Play Based Learning (February 16, 2025)

The workshop on Play Based Learning was conducted for the SSSE Ghazzah and Kamed El Loz Educational Centers, covering various play-based learning theories, research findings, and practical strategies for classroom application.

The training incorporated a variety of interactive activities, including group work, pair work, a Gallery Walk, and Role Play. Participants actively engaged in discussions and hands-on activities, exploring real-life examples of how play could be integrated into daily classroom routines. Additionally, they shared their own experiences and challenges in applying play-based learning within their educational settings.



Psychosocial Support for educators – Himaya (June 16, 17, 18 & 19, 2025)

From June 16th till 19th, 2025, Himaya conducted four training days at the GhazzeH educational center. The training targeted 20 teachers from the GhazzeH and Kamed al Louz Centers, as part of its ongoing efforts to strengthen child protection services.

The main objective of the training was to build the capacity of teachers to deliver Community-Based Psychosocial Support (CBPSS) sessions for children aged 6 to 18. These sessions aim to support children's psychosocial well-being through structured recreational and emotional support activities. In parallel, the training equipped participants with essential skills to identify, respond to, and refer cases of child abuse and protection concerns in line with national child protection protocols.



PFA (Psychological First Aid) Training (November 29, 2025)

23 participants from Barelias Center participated in Psychological First Aid (PFA).

It involved offering support to individuals who were stressed, scared, or overwhelmed after a crisis. Rather than attempting to solve their problems, PFA focused on creating a sense of safety, providing a listening ear, and offering calm reassurance.

The training content effectively addressed their needs, and the participants found it engaging and comprehensive. They actively participated, shared valuable insights, and expressed

Internal Workshops



To ensure that teachers received continuous training and stayed updated with the latest information, skills, and tools for effectively managing their classrooms, the coordinators conducted monthly workshops tailored to their needs. During the academic year, eight comprehensive training sessions were held for teachers in Bar Elias, Ghazzah and Kamed El Loz. These sessions covered a range of innovative and essential topics designed to enhance educational strategies and classroom effectiveness.

SSSE coordinators led internal training sessions on:

- Effective Classroom Management
- Stress Management for Teachers
- Sustainable development goals
- Teach Like a Champion Pt.1
- Teach Like a Champion Pt. 2
- Principles of Human Behavioral Modification 1
- Principles of Human Behavioral Modification 2
- Relieving Test Anxiety



Each workshop was designed to strengthen teachers' capacities in diverse topics and to provide them with the necessary information, and the tools and techniques to improve their in-class performance. These workshops played an impressive role in improving the teachers' pedagogical skills, which led to an improvement in their classroom techniques, allowing a higher rating for the classroom observations conducted by the center coordinators.

Protection & Psycho-Social Support (PSS)

Students:

Psychosocial support activities were implemented at the Ghazzah and Kamed El Loz Centers throughout the 2024-2025 academic year, aiming to equip students with essential skills to enhance emotional resilience and interpersonal interactions. Led by the social worker, these activities addressed a range of challenges faced by students, including academic, familial, and mental health stressors, all of which were further compounded by the ongoing war

Focused PSS sessions were conducted in collaboration with Himaya for 2 age groups (6-11 & 12-17). The intervention covered 12 key topics related to child protection, life skills, and reporting pathways, which led to a significant increase in both knowledge and skill development, particularly in areas such as problem-solving and communication. Participants demonstrated enhanced understanding of child protection concepts and referral pathways. They showed clear awareness of how to seek help and whom to turn to in situations involving abuse, highlighting an important step toward empowering children to protect themselves and others.



Parents:

These sessions aimed to raise awareness and build parental capacity around PSS topics, including the importance of creating a safe home environment, the negative impact of early marriage on children, gender-based violence (GBV) awareness, child protection and safeguarding principles, and the availability of psychosocial support services.



Humanitarian Relief & Support

Despite financial constraints and Lebanon's ongoing economic crisis, SSSE successfully mobilized resources to conduct both winterization and Ramadan campaigns, ensuring that vulnerable families received critical assistance.

The winterization campaign, launched in January, provided essential winter supplies to families in Beirut and the Bekaa region. These distributions helped alleviate the hardships caused by the harsh winter conditions, ensuring that beneficiaries had access to mattresses, blankets, and other necessary items.

The Ramadan campaign, implemented in March 2025, focused on addressing food insecurity during the holy month. Through this initiative, essential food parcels were distributed across all SSSE educational centers, including Kamed El Loz, Ghazzah, and Bar Elias. More than 1,600 Syrian and Lebanese families benefited from the campaign, receiving well-prepared food packages designed to meet their nutritional needs. By ensuring that vulnerable households had access to food items during Ramadan, this initiative not only alleviated food shortages but also reinforced SSSE's commitment to community support.





Water gallons: 726



Mattresses: 943



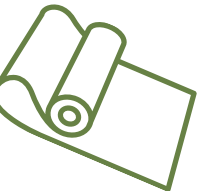
Blankets: 1900



Pillows: 1146



Baby kits: 240



Floor mats: 297



Hygiene kits: 69



Fuel vouchers: 160



Food parcels: 1500

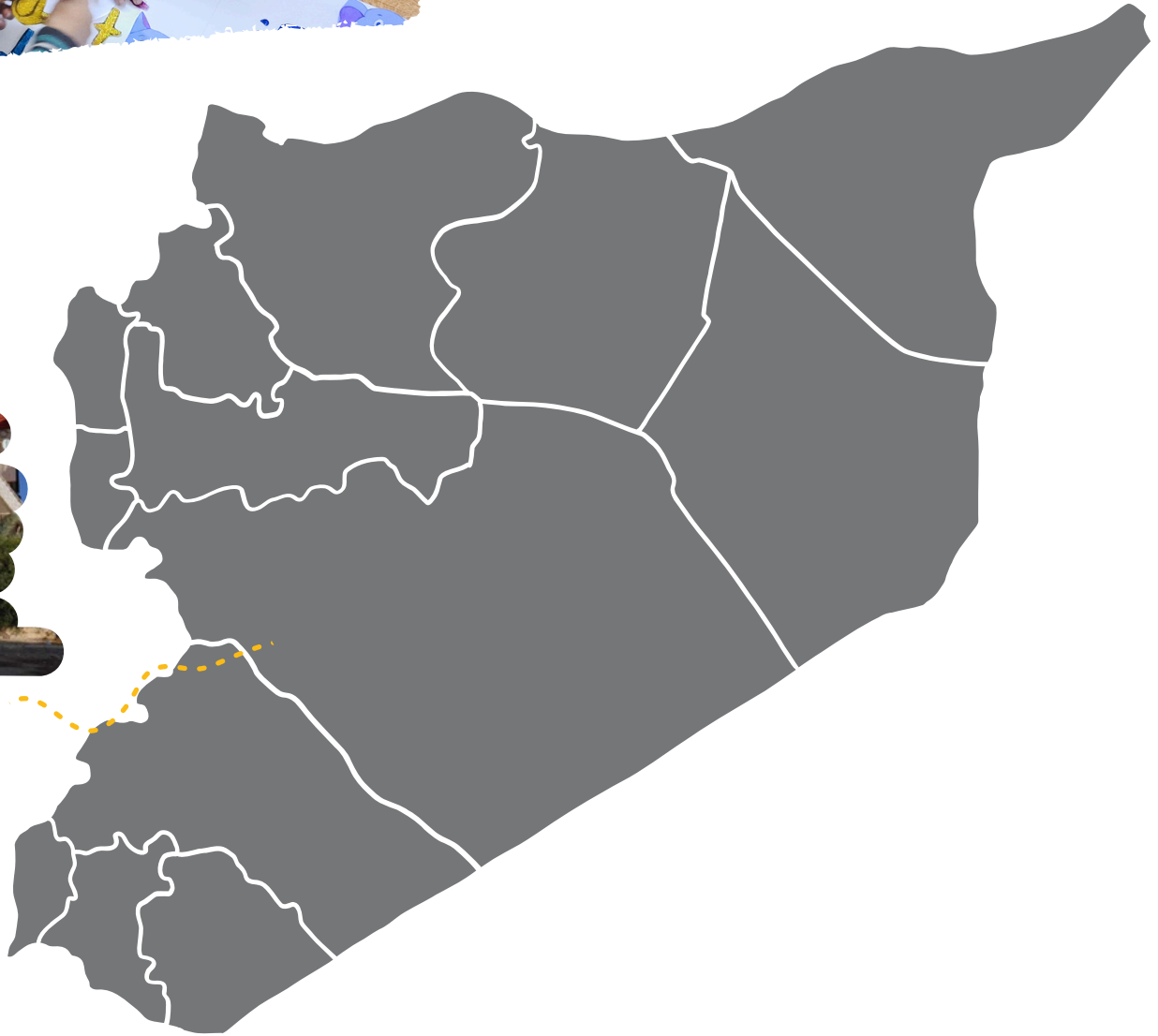


SSEF – Social Support & Education Foundation Syria

This year has been both challenging and deeply inspiring. With the generous support of Orienhelfer, SSSE launched a new project in Syria and undertook the substantial effort of registering the Social Support and Education Foundation (SSEF). We successfully established a modest school in the suburb of Damascus (Al-Sabboura), which has been fully operational since October 2025. The school now provides quality education to 250 students and offers employment opportunities to 18 qualified staff members, including teachers and administrative personnel. These individuals possess an exceptional understanding of their community and, with the right resources and support, can significantly amplify their impact. Looking ahead, a new vocational initiative is scheduled for launch in August 2026, focusing on essential vocational training programs such as electrical and digital skills.



About SSEF



El Sabboura



Thank You



To Our Donors and Private Supporters



arche noVa
Initiative for People in Need



Orienthelfer
جمعية مساندة الشرق



SACHSEN



thaki





Socialsupportededucation.org

